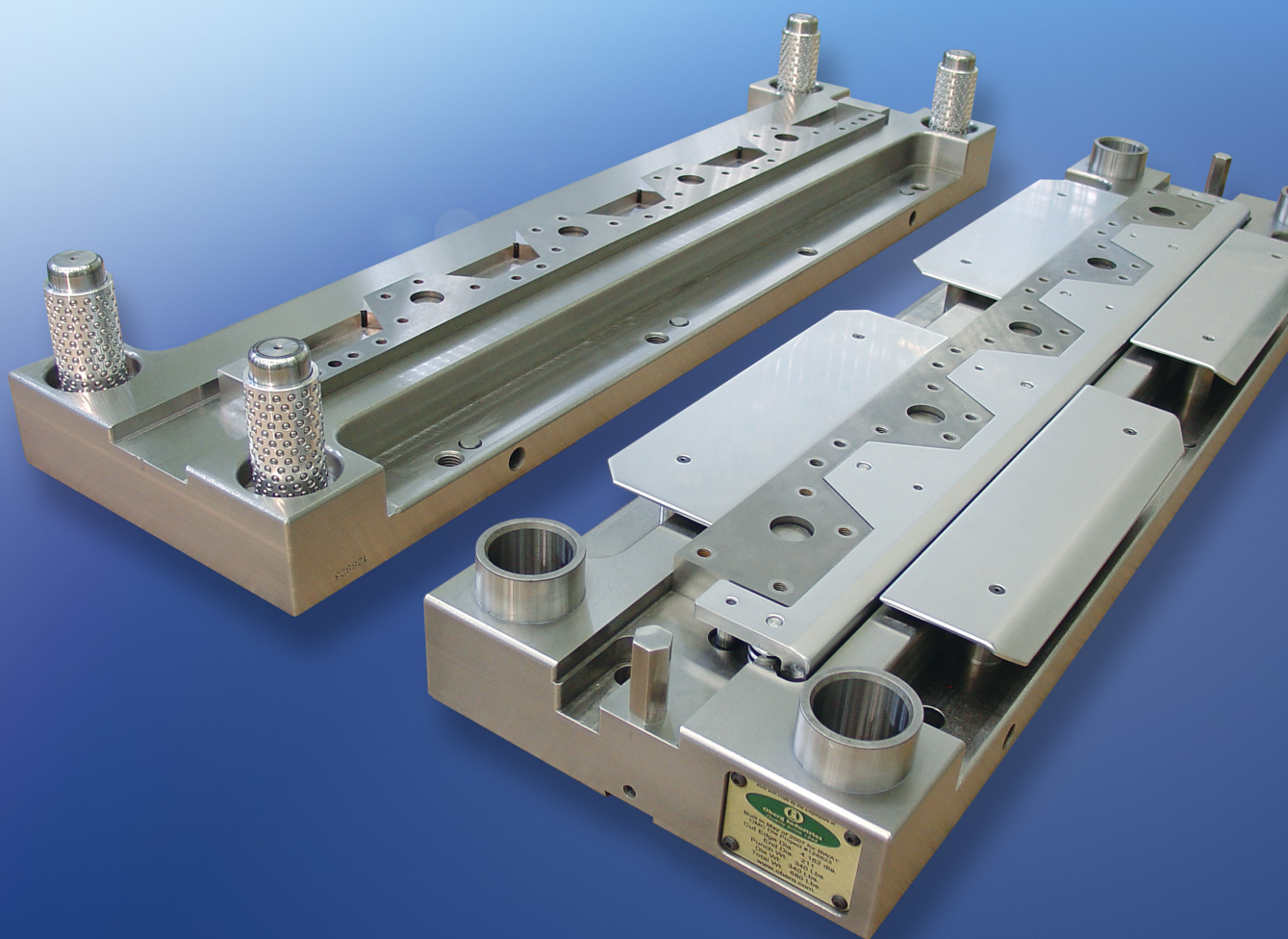


Premier
DESIGN

Carbide Primary & Secondary Scroll Dies



Quality, Precision, and Long Lasting Performance.

Made with the finest quality tungsten carbide, iron, and steel, Oberg Premier Scroll Dies are designed for uncompromised dependability and high volume production runs. These dies are manufactured to keep your production lines operating with minimum servicing.

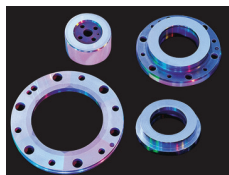
Oberg manufactures straight and scroll cut primary dies and single and double cut secondary scroll dies. Die components are precision machined and 100% guaranteed interchangeable for increased tool life and easy repair.

Each primary scroll design is available with 43", 47", and 54" die sets and standard Littell® mountings and quick clamping provisions. Take advantage of our spare parts packages that can be customized to fit your needs providing additional cost savings and faster deliveries.

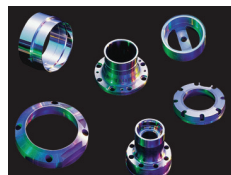
Oberg tooling is supported by our experienced die technicians who are available to train customer personnel in set-up and service techniques. Please contact us for more details.

| FEATURES | BENEFITS |
|---|---|
| Precision machined cast iron punch and die shoes | Less likely to bow or twist providing greater dimensional stability |
| 1" thick carbide cut-edges | Provide longer tool life |
| Cut-edges fit securely in channels precision machined into castings and typically located by a 1" dowel | Guarantees accurate positioning of segments and assists with serviceability |
| Ground internal and external radii on cut-edges | Eliminate corner burrs and reduce wear so die runs longer between servicings |
| Die components are 100% guaranteed interchangeable | Minimizes downtime with repairs often done onsite |
| Quick clamp provisions for Littell shear lines | Allows easy integration into most scroll shear lines without any modification |
| Ball bearing guide components | Maintain better alignment which helps to extend die life |
| Chrome plated stainless steel inbound and outbound plates | Resist scratching of the sheet |
| Chrome plated steel conforming stripper | Provides maximum support to prevent distortion of the sheet with chrome to resist scratching |
| 3-D solid modeling program used for each die design | Enables quicker generation of tooling design and provides easier verification of critical dimensions to ensure accuracy |
| Assembly drawings and a parts list are supplied with each design | Allows for easier customer maintenance, inspection, and tooling reference |

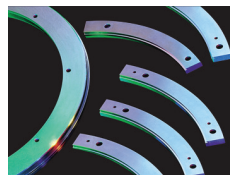
Oberg manufactures a variety of carbide, steel, and ceramic components used to produce food and beverage cans and ends such as:



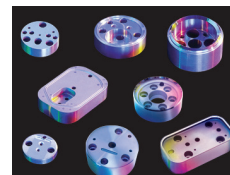
Copper Tooling



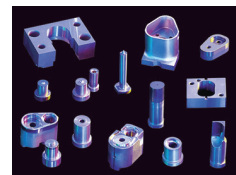
Shell Tooling



Curling Rings & Segments



Score Tooling



Rivet & Tab Tooling



2301 Silvertown Road
Freeport, PA 16229-0315 U.S.A.



Phone: 724.295.2121
Fax: 724.295.2588
www.oberg.com
inquire@oberg.com

Certifications:
ISO 9001:2008, ISO 13485:2003
AS9100:2009 Rev. C
FDA and ITAR registered

Manufacturing Locations
• Freeport, PA • Chicago, IL
• Sarver, PA • Wallingford, CT